

DATA SHEET

# U 5.40 (XL K) ROTARY VANE VACUUM PUMPS

oil-lubricated  
air-cooled

**MAKE IT BECKER.**

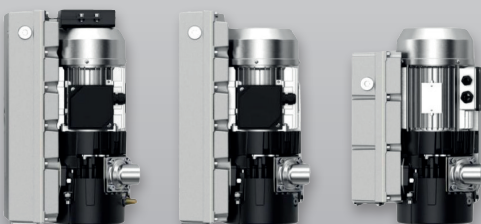
**ROBUST  
AND QUIET**

**40 m<sup>3</sup>/h**

and compact enough for  
table-top packaging machines

**MODULAR**

**40% FASTER EVACUATION TIME**  
compared to the industry standard



U 5.40 XL K

U 5.40 XL

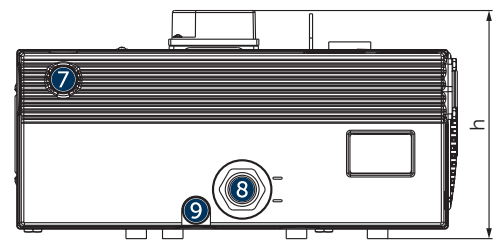
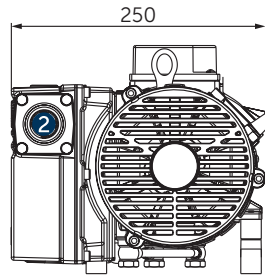
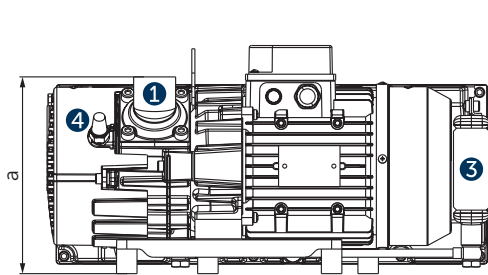
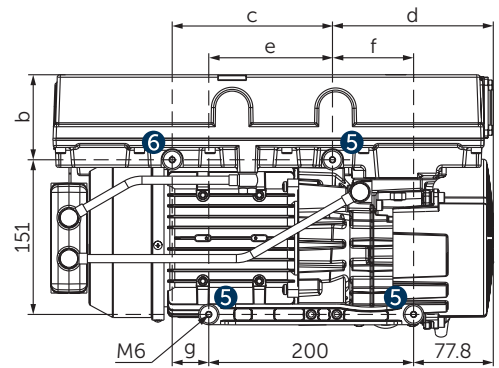
U 5.40



a	b	c	d
≤192.1	83/82.7	156.5	157/190
e	f	g	h
120.8/87.8	79.2/112.2	35.7	222.7/203.7

▪ depending on motor version

Oil tank	k
1.0 l	430
0.5 l	309

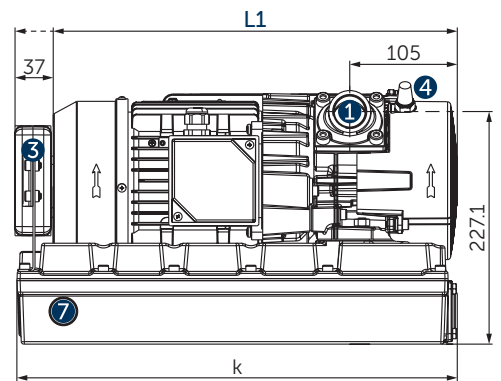


	U 5.40 XL K	U 5.40 XL	U 5.40
1 Vacuum connection (G1), rotatable in 90° steps	vertical (see drawing)	horizontal	horizontal
2 Exhaust air side	G <sup>3</sup> / <sub>4</sub>	open	open
3 Oil-air cooler	inclusive	–	–
4 Gas ballast valve	inclusive	optional	optional
5 Rubber buffers, 3 pieces	inclusive	inclusive	inclusive
6 Additional rubber buffer	inclusive	inclusive	–

- 7 Oil filler cap
- 8 Oil sight glas
- 9 Screw plug for oil drain

L Overall device length L1 with motor is variable, see separate motor specification sheet

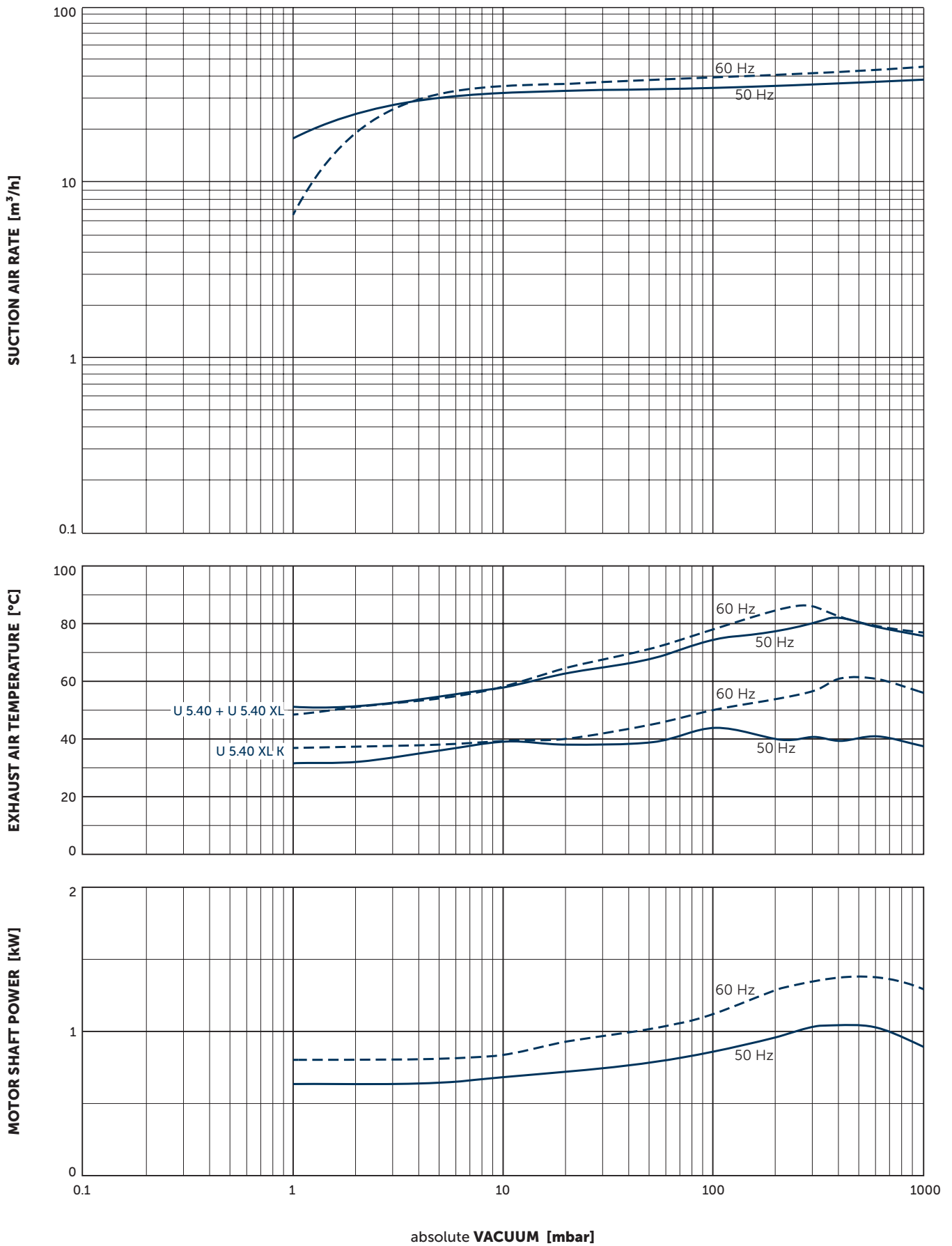
- Non-return valve and oil separator are integrated
- The motor illustration may vary
- Dimensions in mm



	Nominal capacity		Vacuum absolute for continous operation		Installed motor power		Emission sound pressure level <sup>1)</sup>		Weight incl. motor	Oil tank
	m <sup>3</sup> /h		mbar		kW		dB(A)		kg	l
	50 Hz	60 Hz	50 Hz	60 Hz	50 Hz	60 Hz	50 Hz	60 Hz	3~/1~	
<b>U 5.40 XL K</b>	40	48	1.0–300	1.0–300	1.1	1.35	67	71	27.0/28.5	1.0
<b>U 5.40 XL</b>	40	48	1.0–100	1.0–100	1.1	1.35	67	71	26.3/27.8	1.0
<b>U 5.40</b>	40	48	1.0–100	1.0–100	1.1	1.35	64	67	25.0/26.5	0.5

<sup>1)</sup> According to DIN EN ISO 11203, accuracy class of measurement: class 2, extended measurement uncertainty: 3 dB  
1 m distance, at medium load, vacuum connection piped, exhaust side open

- Gas ballast valve: vacuum <2 mbar (with opened gas ballast valve), water vapour tolerance max. 12 mbar, water vapour capacity max. 0.35 l/h (at 85°C operating temperature)
- Reference data (atmosphere): 1000 mbar, 20°C; tolerance: ±10%



Suction air rate refers to the intake pressure  
 Reference data (atmosphere): 1000 mbar, 20°C  
 Tolerance: ±10%

## + VARIANTS AND ACCESSORIES

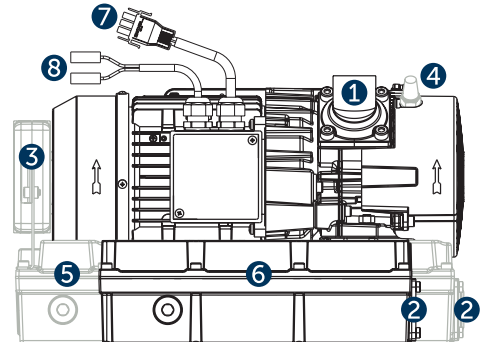
### U 5.40 (XL) WITH MATE-N-LOK POWER CONNECTION

	U 5.40 XL K	U 5.40 XL	U 5.40
1 Vacuum connection (G1), rotatable in 90° steps	vertical	horizontal (see illustration)	horizontal (see illustration)
2 Exhaust air side	G $\frac{3}{4}$	open	open
3 Oil-air cooler	inclusive	–	–
4 Gas ballast valve	inclusive	optional	optional
5 1.0 l oil tank	inclusive	inclusive	–
6 0.5 l oil tank	–	–	inclusive

7 Power connection (Mate-N-Lok)

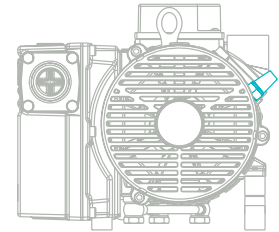
8 Capacitor connection Faston F 6.3

▪ Motors see separate motor specification sheet



### GAS BALLAST VALVE

		Version 1	Version 2
for ... amounts of moisture		small	higher
Vacuum (with opened gas ballast valve)	[mbar]	<2	<20
Water vapour tolerance	max. [mbar]	12	on request
Water vapour capacity (at 85°C operating temperature)	max. [l/h]	0.35	on request



### LEVEL SENSOR (OIL LEVEL SWITCH)

- **ST 628-0-22** (for 0.5 litre oil tank)
- **ST 628-0-23** (for 1.0 litre oil tank)

\* Only for vertical installation



### BECKER LUBE<sup>1)</sup>

- **M 68** mineral
- **M 32** mineral
- **S 68** synthetic
- **S 32** synthetic
- **SL 68** food (food packaging)
- **SL 32** food (food packaging)
- **SM 68** food (food processing)
- **SM 32** food (food processing)

<sup>1)</sup> See operating instructions



Freely configurable service openings (illustration 0.5l oil tank)

**MAKE IT BECKER.**

HOMEPAGE  
[U SERIES SMALL](#)



DOWNLOAD  
[MOTOR SPECS.](#)



ONLINE SHOP

