

DATA SHEET

U 5.166

ROTARY VANE VACUUM PUMPS

oil-lubricated
air-cooled

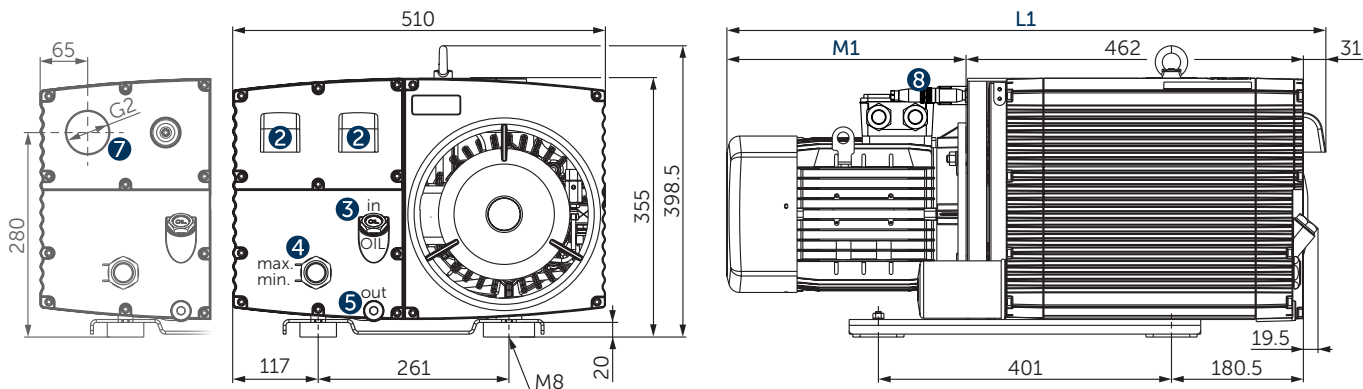
MAKE IT BECKER.

FASTEST PUMP-DOWN TIME

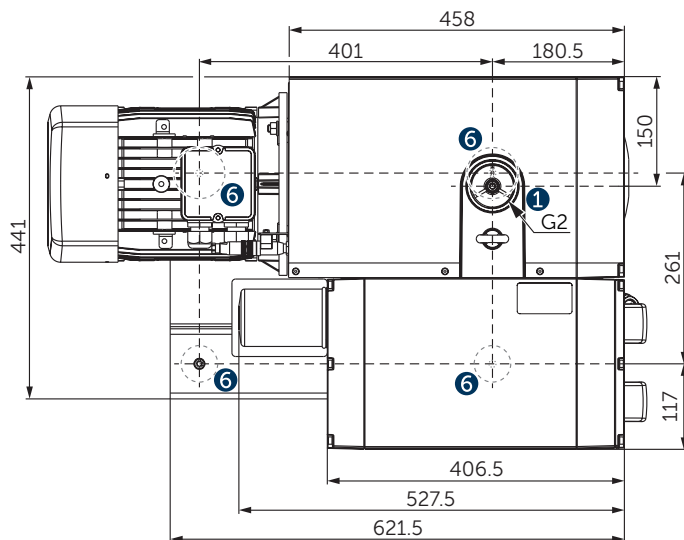
**GAS BALLAST
VALVE**



HIGH WATER VAPOR TOLERANCE



- 1 Vacuum connection (G2)
- 2 Exhaust air (diverter)
- 3 Oil filler cap (G³/₄)
- 4 Oil sight glas (G1)
- 5 Screw plug for oil drain (G¹/₂)
- 6 Rubber buffer position
- 7 optional: threaded connector for exhaust air (G2)
- 8 optional: temperature sensor PT100
- L Overall device length L₁ with motor. L₁ and M₁ are variable, see separate motor specification sheet.
- incl. gas ballast valve, non-return valve, oil separator and oil filter
- The motor illustration may vary
- Dimensions in mm



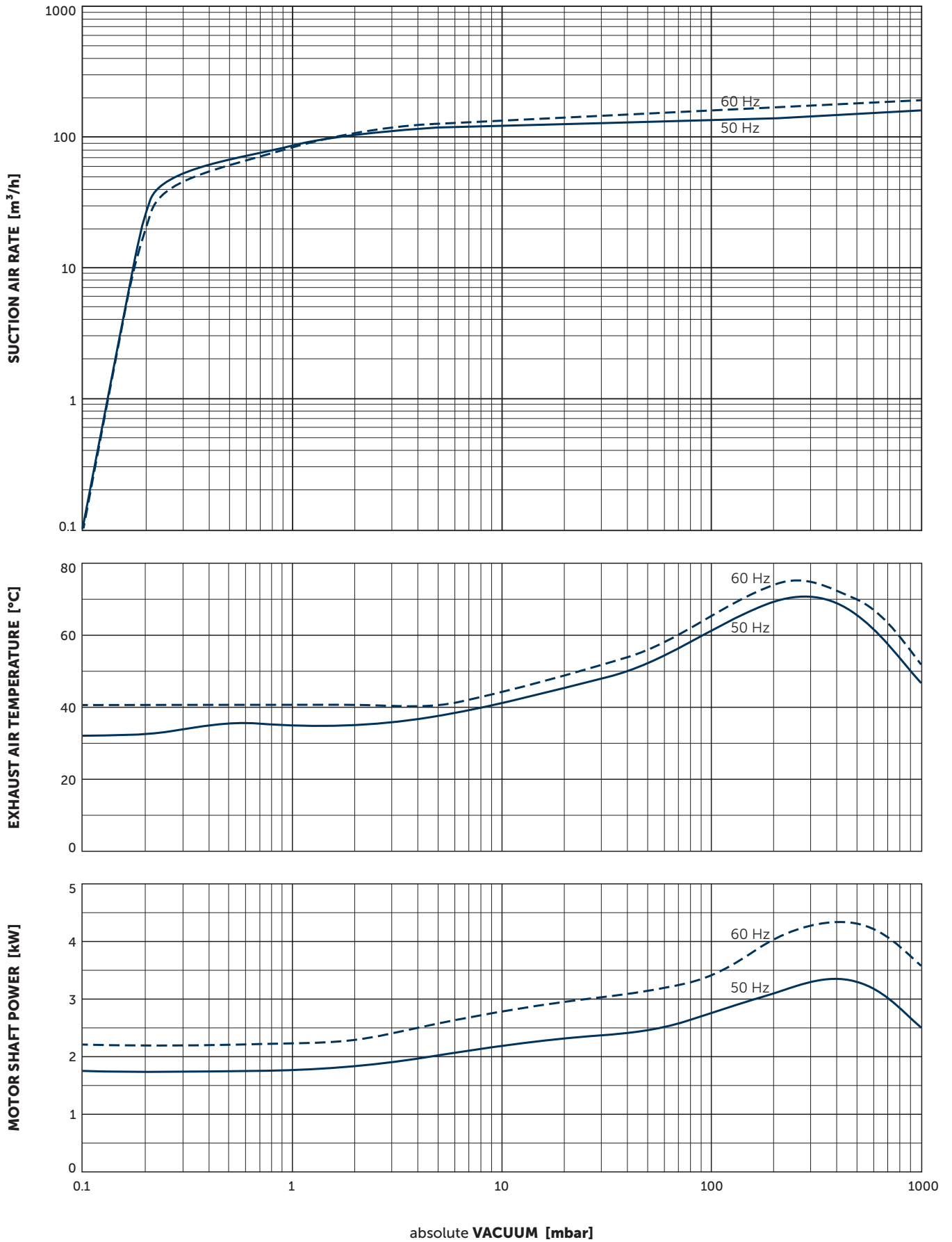
Nominal capacity		Vacuum absolute for continous operation		Installed motor power		Emission sound pressure level ¹⁾		Weight w/o motor	Oil ²⁾
m ³ /h		mbar		kW		dB(A)		kg	l
50 Hz	60 Hz	50 Hz	60 Hz	50 Hz	60 Hz	50 Hz	60 Hz		
165	198	<0,1–100	<0,1–100	3.0	3.6	70	72	70	5
165	198	<0,1–400	<0,1–400	4.0	4.5–4.8	70	72	70	5

¹⁾ According to DIN EN ISO 11203, accuracy class of measurement: class 2, extended measurement uncertainty: 3 dB
 1 m distance, at medium load, both connection sides piped

²⁾ Becker Lube M100 mineral • S100 synthetic • SL100 food packaging applications • SM100 food processing applications

▪ Reference data (atmosphere): 1000 mbar, 20°C; Tolerance: ±10%

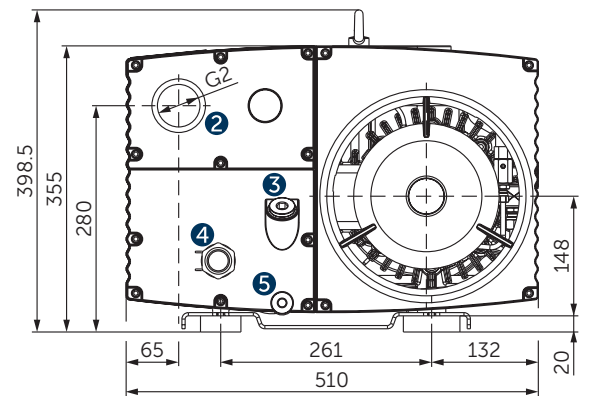
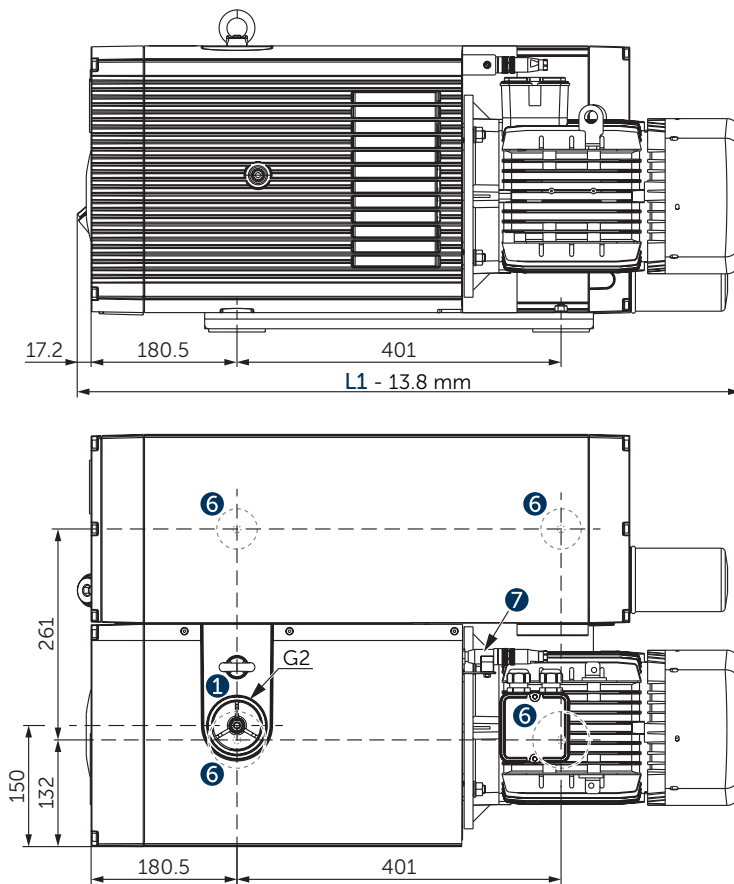
▪ Gas ballast valve: vacuum 1.0 mbar absolute with opened gas ballast valve; water vapour tolerance max. 7 mbar; water vapour capacity max. 0.3 l/h (at 85°C operating temperature)



Suction air rate refers to the intake pressure
 Reference data (atmosphere): 1000 mbar, 20°C
 Tolerance: ±10%

+ VARIANTS AND ACCESSORIES

- **U 5.166 O2-PACK¹⁾** for packaging with an overconcentration of oxygen
- **U 5.166/0-62 XL** with enlarged oil tank and high efficient triple stage oil separation, weight without motor: 80 kg, oil quantity: 10 l, further technical data, motors and characteristic curves like standard pump



U 5.166/0-62 XL

- 1 Vacuum connection (G2)
 - 2 Exhaust air connection (G2)
 - 3 Oil filler cap (G³/₄)
 - 4 Oil sight glass (G1)
 - 5 Screw plug for oil drain (G¹/₂)
 - 6 Rubber buffer position
 - 7 Optional temperature sensor PT100
- L Length see motor table
- incl. gas ballast valve, non-return valve, oil separator and oil filter
 - The motor illustration may vary
 - Dimensions in mm

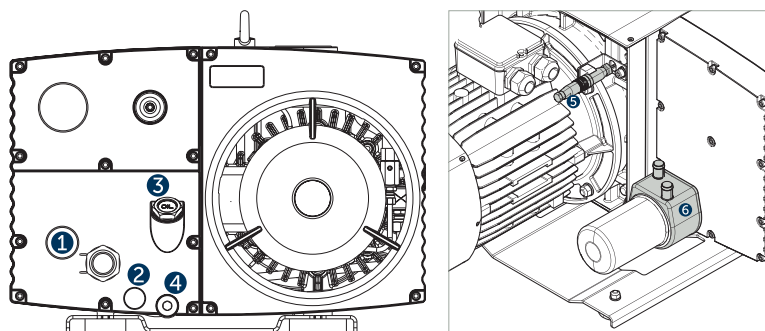
¹⁾ See separate data sheet

- Combination options on request

ACCESSORIES

- External suction filter¹⁾
- Oil:
 - Becker Lube M100 mineral
 - S100 synthetic
 - SL100 food packaging applications
 - SM100 food processing applications

- 1 Oil level switch¹⁾ (G1)
- 2 Oil temperature monitor¹⁾ (G¹/₂)
- 3 Maintenance indicator¹⁾ (G³/₄) for oil separating elements
- 4 Ball valve (G¹/₂), with locking and hose connector 19 mm
- 5 Temperature sensor PT100
- 6 Water cooler U5.200-0-114.2¹⁾



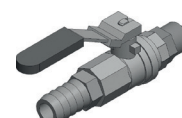
Oil level switch



Oil temperature monitor



Maintenance indicator



Ball valve

U 5.166 versions	Gas ballast valve		Threaded connector for exhaust air	Prepared for additional accessories (e.g. oil level switch; see above)
	Standard	for increased water vapour tolerance		
U 5.166/0-00	✓			
U 5.166/0-01	vacuum 1.0 mbar absolute with opened gas ballast valve; water vapour tolerance max. 7 mbar; water vapour capacity max. 0.3 l/h (at 85°C operating temperature)		✓ (G2)	
U 5.166/0-02				✓
U 5.166/0-03			✓ (G2)	✓
U 5.166/0-04	✓			
U 5.166/0-05	vacuum 3.0 mbar absolute with opened gas ballast valve; water vapour tolerance max. 50 mbar; water vapour capacity max. 2 l/h (at 85°C operating temperature)		✓ (G2)	
U 5.166/0-06				✓
U 5.166/0-07			✓ (G2)	✓

¹⁾ See separate data sheet
 ▪ Combination options on request



MAKE IT BECKER.

HOMEPAGE
U SERIES



DOWNLOAD
MOTOR SPECS.



ONLINE SHOP

